



20
24



PEDALS DROPPER POST HEAD SHOCK STEM

PROFESSIONAL ACCESSORIES

▶▶▶▶ INNOVATION / PRECISION / QUALITY



新可大國際股份有限公司
Scada International Co. Ltd.

No.3, E. 2nd St., Youth Ind. Park, Dajia Dist.,
Taichung City 437104, Taiwan
Tel: 886-4-26822656 Fax: 886-4-26822659
E-mail: sales@scada-tw.com
www.scadatw.com

Specifications subject to change without notice.
SCADA is a trademark of SCADA International Co. Ltd.
Copyright © SCADA International Co. Ltd.
All other trademarks are the property of their respective owners.
SCADA 2024 catalogue © Copy right reserved



企業使命 Corporate Mission

成為全球精密製造產業中，值得長期信賴的品質、技術與產能提供者。

Be a quality-focused, technologically innovative, progressive, and reliable supplier in the global precision manufacturing industry.

“

WELCOME TO **SCADA**
PROFESSIONAL TECHNOLOGY COMPANY

Hello,

Let me introduce **SCADA**.

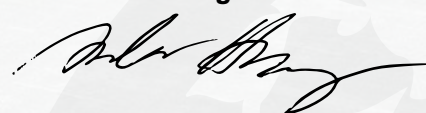
SCADA has vast experience in making pedals, and suspension products for other leading companies. Our large, highly skilled R&D team has helped a range of companies develop high-end market-ready products.

R&D is augmented by our **QA/QC** team and the state of the art testing facilities they have at their disposal.

Talk to me about your **OEM** or **ODM** requirements.

I look forward to hearing from you.

Andrew Huang



www.scadatw.com
sales@scada-tw.com

“

- 2012** Scada was founded.
- 2013** PEDAL and REAR SHOCK launched.
- 2014** Bike Fitting Machine launched.
Lean Production introduced. To improve production efficiency and performance.
- 2015** Chain Guide patent authorized. Layout changed from mass production to one-piece-flow.
- 2016** The 1st TPS Performance of presentation.
- 2017** Moving factory from Wuri to Dajia Youth Ind. Park.
To improve purpose-built facility and increase production capacity.
- 2018** DROPPER POST launched.
ISO 9001 : 2015 qualified.
MES system introduced. To be an IT factory and enhance the competitive power.
- 2019** Set up Solar Power Generation to reduce carbon emissions.
Head Shock launched.
- 2020** Set up 2nd factory at Dajia Youth Ind. Park to increase production capacity.
- 2021** The turnover grows 200% and 200 employee.
- 2022** 3rd factory start to increase capacity.
- 2023** The 1st tour de Taiwan with management team including charitable contributions.
To be the member of BAS to involve ESG and Net Zero Emissions.

OUR HISTORY

CONTENTS

01

INTRODUCE

03

DROPPER
POST

05

HEAD
SHOCK

06

STEM

07

AXLES &
BEARINGS

08

EXTRUSION
BODY

11

ROAD
PEDAL

13

MTB
PEDAL

23

BMX
PEDAL

33

CITY
PEDAL

37

INDOOR CYCLING
PEDAL

39

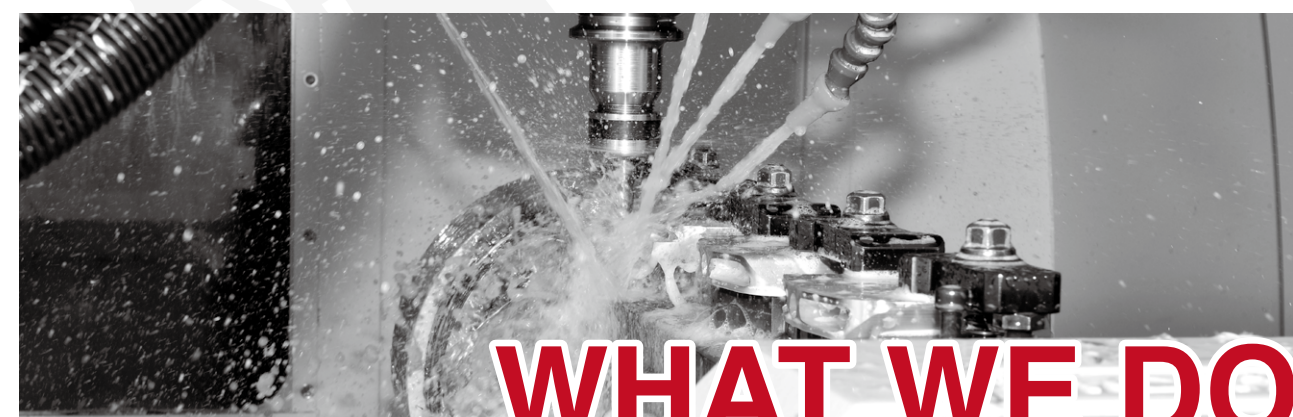
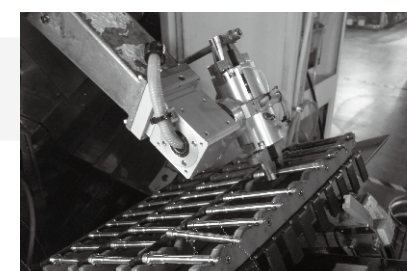
PEDAL
CLEAT

41

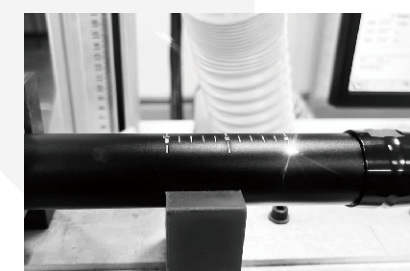
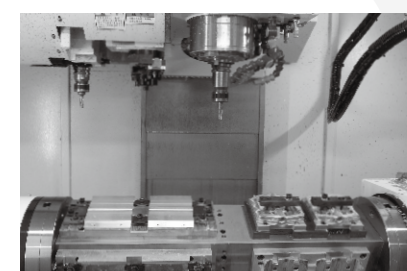
PEDAL PINS
STRAP

42

CHAIN GUIDE



WHAT WE DO





SP DROPPER POST

	MODEL NO.	O.D. (mm)	Travel (mm)	Length (mm)	Cartridge	Weight (g)
★	SP30980	30.9	80	306	Air/Oil	485
★	SP309100	30.9	100	346	Air/Oil	513
	SP309125	30.9	125	396	Air/Oil	565
	SP309150	30.9	150	458	Air/Oil	665
	SP309170	30.9	170	492	Air/Oil	693
★	SP31680	31.6	80	306	Air/Oil	500
★	SP316100	31.6	100	346	Air/Oil	528
	SP316125	31.6	125	396	Air/Oil	580
	SP316150	31.6	150	458	Air/Oil	680
	SP316170	31.6	170	492	Air/Oil	708
	SP349125	34.9	125	396	Air/Oil	680
	SP349150	34.9	150	458	Air/Oil	778
	SP349170	34.9	170	492	Air/Oil	824

★ Special make up options for Youth rider.
(SPY30980/SPY309100/SPY31680/SPY316100)



SP+ DROPPER POST

	MODEL NO.	O.D. (mm)	Travel (mm)	Length (mm)	Cartridge	Weight (g)
★	SP+30980	30.9	80	306	Air/Oil	485
★	SP+309100	30.9	100	346	Air/Oil	513
	SP+309125	30.9	125	396	Air/Oil	565
	SP+309150	30.9	150	458	Air/Oil	665
	SP+309170	30.9	170	492	Air/Oil	693
★	SP+31680	31.6	80	306	Air/Oil	500
★	SP+316100	31.6	100	346	Air/Oil	528
	SP+316125	31.6	125	396	Air/Oil	580
	SP+316150	31.6	150	458	Air/Oil	680
	SP+316170	31.6	170	492	Air/Oil	708
	SP+349125	34.9	125	396	Air/Oil	680
	SP+349150	34.9	150	458	Air/Oil	778
	SP+349170	34.9	170	492	Air/Oil	824

★ Special make up options for Youth rider.
(SP+Y30980/SP+Y309100/SP+Y31680/SP+Y316100)

HAKA DROPPER POST

	MODEL NO.	O.D. (mm)	Travel (mm)	Length (mm)	Cartridge	Weight (g)
	HAKA272100	27.2	100	367	Air/Oil	472
	HAKA309125	30.9	125	386	Air/Oil	465
	HAKA309155	30.9	155	446	Air/Oil	526
	HAKA309185	30.9	185	506	Air/Oil	580
	HAKA309215	30.9	215	566	Air/Oil	623
	HAKA316125	31.6	125	386	Air/Oil	486
	HAKA316155	31.6	155	446	Air/Oil	545
	HAKA316185	31.6	185	506	Air/Oil	597
	HAKA316215	31.6	215	566	Air/Oil	647
	HAKA349125	34.9	125	386	Air/Oil	519
	HAKA349155	34.9	155	446	Air/Oil	572
	HAKA349185	34.9	185	506	Air/Oil	625
	HAKA349215	34.9	215	566	Air/Oil	682



ROTATE

HAKA SUS DROPPER POST

	MODEL NO.	O.D. (mm)	Travel (mm)	Length (mm)	Cartridge	Suspension travel	Weight (g)
	HASUS309125	30.9	125	386	Air	35	474
	HASUS309155	30.9	155	446	Air	35	535
	HASUS316125	31.6	125	386	Air	35	495
	HASUS316155	31.6	155	446	Air	35	554

REMOTE LEVER



RLV01
ALLOY

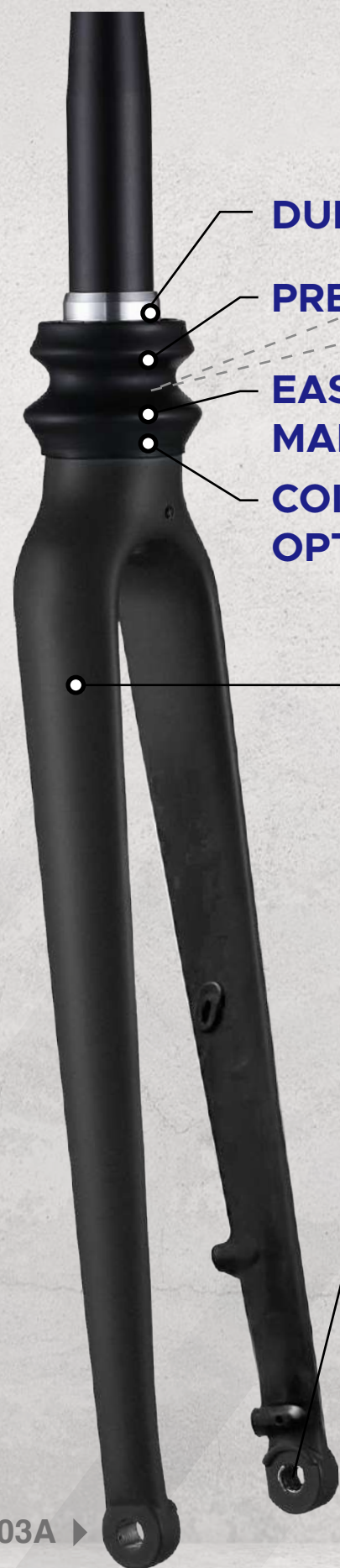
RLH01
NYLON

Angle adjustable

Position adjustable

RLH02
ALLOY

RLH03
ALLOY



DURABLE

PRELOAD

**EASY
MAINTAINING
COIL SPRINGS
OPTIONS**

ELEGANT

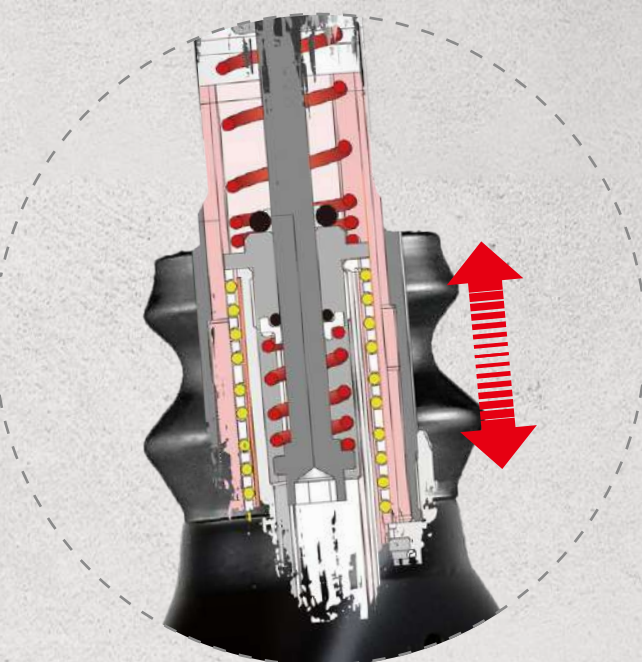
- **PRELOAD SYSTEM**
(PATENT #M591949)
- **EASY GREASING SYSTEM**
(PATENT PENDING)
- **3 COIL SPRINGS K-RATE OPTIONS**
- **3 YEARS WARRANTY**
- **PRODUCT LIABILITY INSURANCE**

**CUSTOMIZED
SPECIFICATIONS**

HF-03A

Category	E-Gravel 700C
Travel	35mm
Blade	Alloy
Steerer	CrMo
Crown	56mm
Axle-Crown	473mm
Tire Clearance	58mm
Offset	45mm
Dropout	12-100mm Thru Axle
Brake	Flat Mount

Alloy Steerer
Version
HF-03B



HF-01A

Category	E-City/Trekking 28"
Travel	35mm
Blade	Alloy
Steerer	CrMo
Crown	56mm
Axle-Crown	488mm
Tire Clearance	74mm
Offset	45mm
Dropout	15-100mm Thru Axle
Brake	Post mount

Alloy Steerer
Version
HF-01B



HF-02A

Category	E-City/Trekking 28"
Travel	35mm
Blade	Alloy
Steerer	CrMo
Crown	56mm
Axle-Crown	488mm
Tire Clearance	74mm
Offset	45mm
Dropout	9-100mm QR Axle
Brake	Post mount

Alloy Steerer
Version
HF-02B



HF-06A

Category	E-City/Trekking 28"
Travel	35mm
Blade	Alloy
Steerer	CrMo
Crown	56mm
Axle-Crown	487mm
Tire Clearance	70mm
Offset	45mm
Dropout	9-100mm QR Axle
Brake	Post mount

Alloy Steerer
Version
HF-06B



HF-07A

Category	E-City/Trekking 28"
Travel	35mm
Blade	Alloy
Steerer	CrMo
Crown	56mm
Axle-Crown	487mm
Tire Clearance	70mm
Offset	45mm
Dropout	9-100mm QR Axle
Brake	Post mount

Alloy Steerer
Version
HF-07B



NEW

STM01

MATERIAL	AL6061-T6
BAR BORE	35mm
EXTENSION	35mm / 50mm



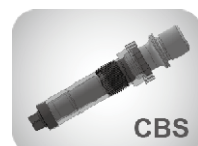
HF-03A ▶



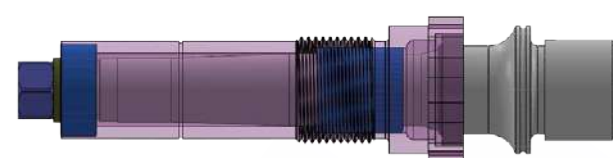
Loose Ball System



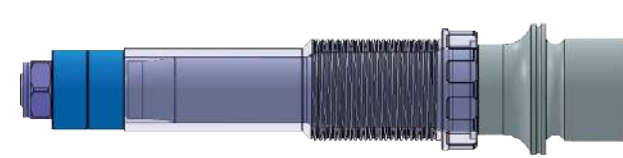
**LSL Bushing
+ Sealed bearing System**



**Cartridge w/ Bushing
+ Sealed bearing System**



**Compact cartridge w/ Bushing
+ Sealed bearing System**



**Oversize Bearing
+ Needle Bearing
+ Sealed Bearing System**



**Oversize Bearing
+ LSL Bushing System**



**Needle
+ Sealed Bearing System**



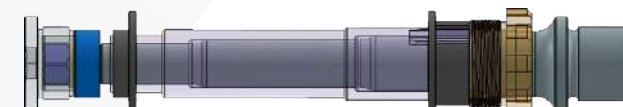
**LSL Bushing
+ Needle Bearing
+ Sealed Bearing System**



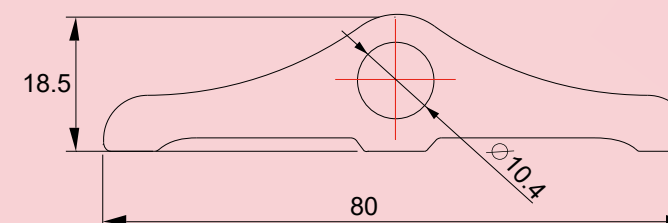
2 Polymer Bushings System



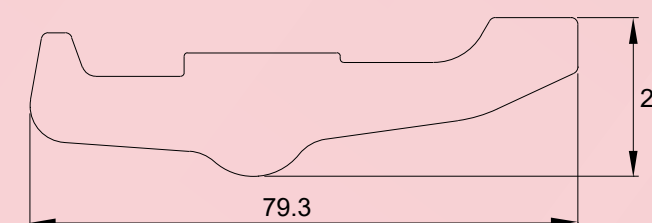
**Pop-Up System w/ LSL Bushing
+ Sealed bearing**



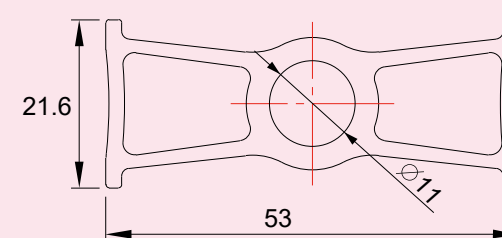
MZ-023 (R904)



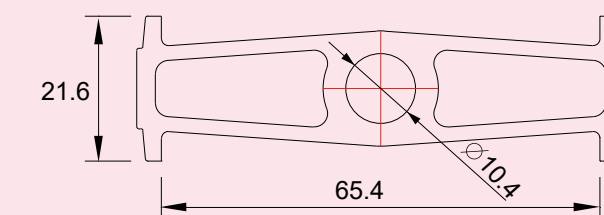
MZ-050 (R305)



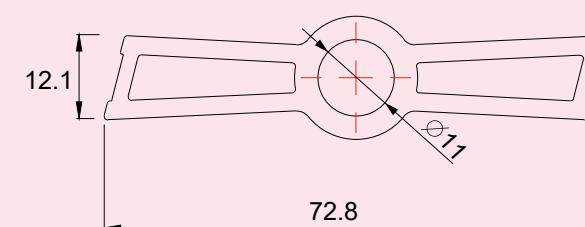
MZ-004 (C806)



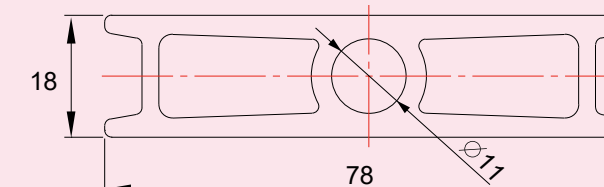
MZ-015 (C811)



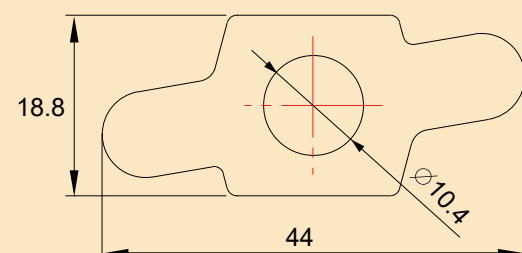
MZ-064 (C829 / C830)



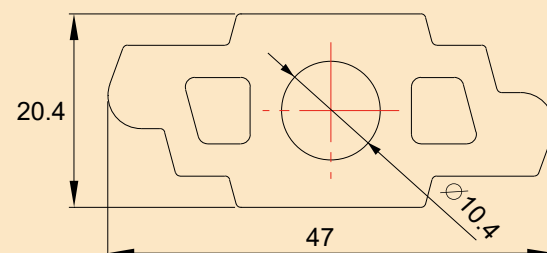
MZ-001 (C821)



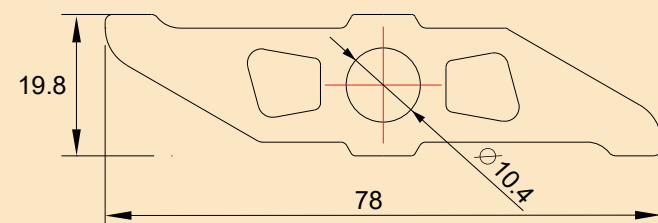
MZ-031 (M120)



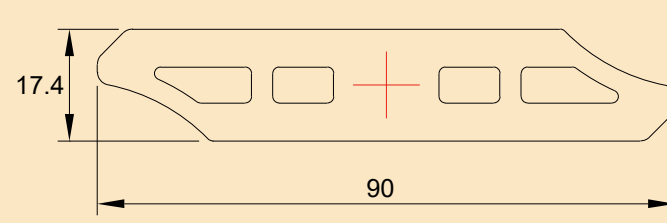
MZ-032



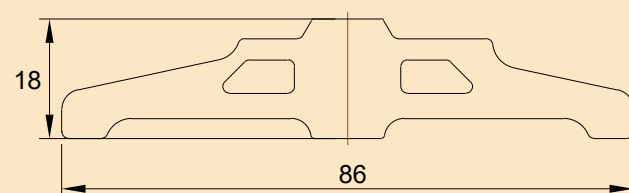
MZ-019 (M111 / M112)



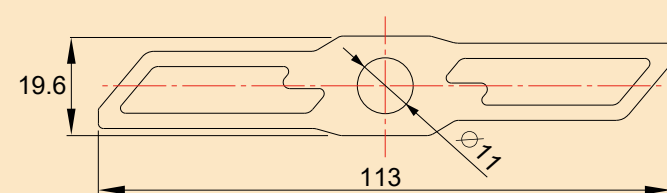
MZ-026 (M122)



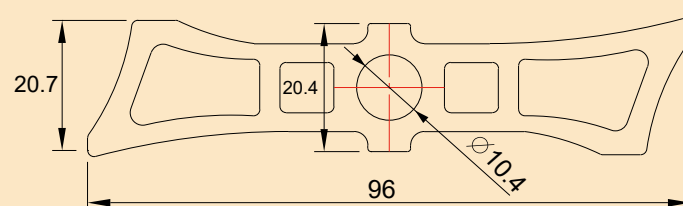
MZ-025 (M206 / M208 / M209)



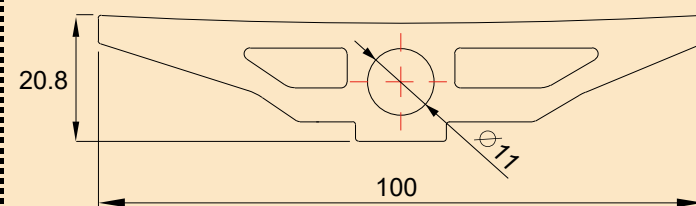
MZ-068 (M221)



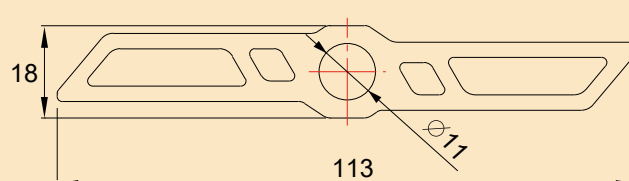
MZ-016 (M117)



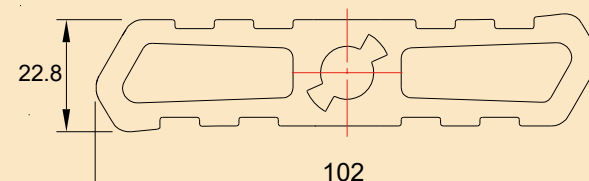
MZ-063 (M218 / M219)



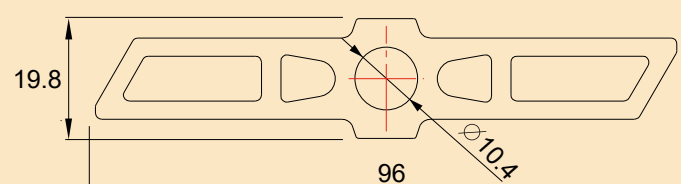
MZ-002 (M126 / M213)



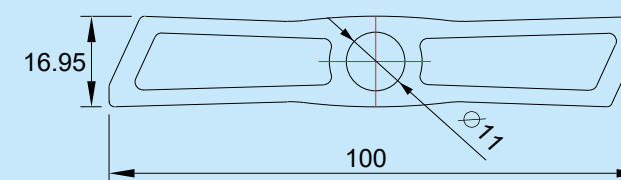
MZ-048 (M129)



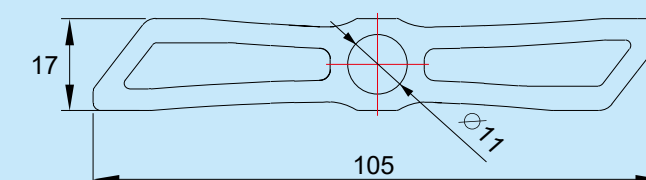
MZ-056 (M108 / M138)



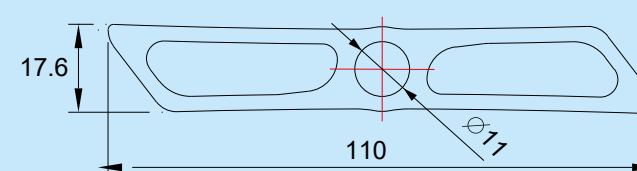
MZ-012 (B614 / B634 / B682)



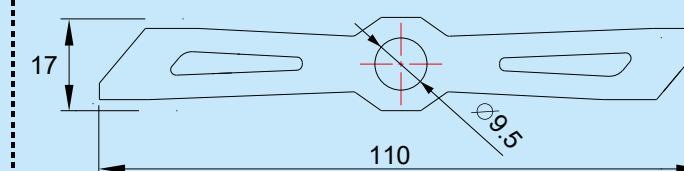
MZ-007 (B631 / B676)



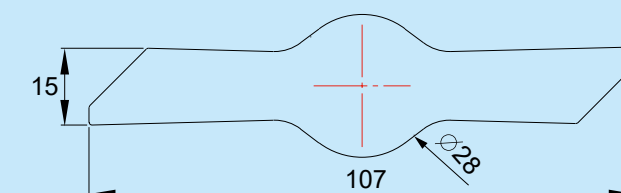
MZ-005 (B609)



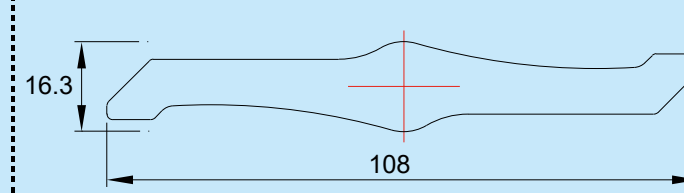
MZ-036 (M224 / B707 / B729 / B730)



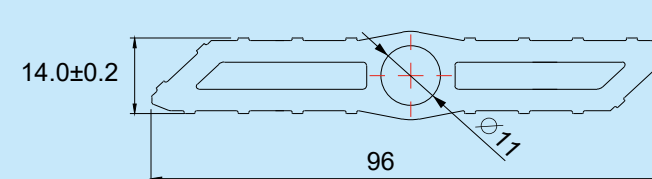
MZ-052 (B680)



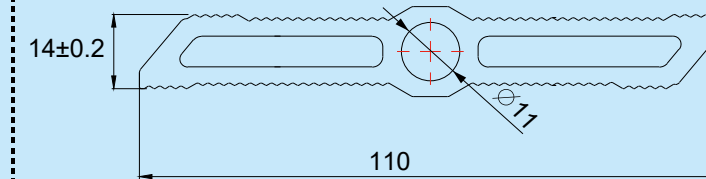
MZ-034 (B649 / B663)



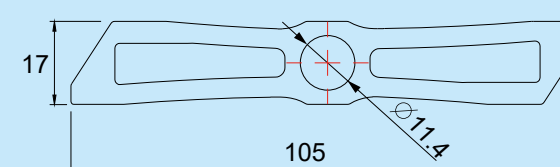
MZ-067



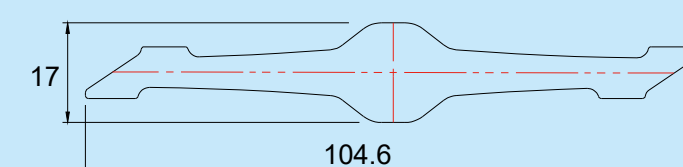
MZ-066 (B641 / B642 / B743)



MZ-086



MZ-087 (B636)





SC-R304ST



BODY	Engineering thermoplastic
AXLE	CNC-machined Cr-Mo (cartridge)
BEARING	Compact cartridge w/ Bushing, Sealed bearing
BINDING	Fiber-glass reinforced thermoplastic, tension adjustable
CLEAT	SC-KCR71
SIZE	83x94 mm
WEIGHT	125g/pc



SC-R104



BODY	Engineering thermoplastic
AXLE	CNC-machined Cr-Mo (cartridge)
BEARING	Compact cartridge w/ Bushing, Sealed bearing
BINDING	Fiber-glass reinforced thermoplastic, tension adjustable
CLEAT	SC-DCR61
SIZE	87x98 mm
WEIGHT	134g/pc



SC-R301



BODY	Die-cast aluminum
AXLE	CNC-machined Cr-Mo (cartridge)
BEARING	Cartridge w/ Bushing, Sealed bearing
BINDING	Fiber-glass reinforced thermoplastic, tension adjustable
CLEAT	SC-KCR71
SIZE	86x86mm
WEIGHT	164g/pc



SC-R305



BODY	6061 aluminum, CNC-machined
AXLE	CNC-machined Cr-Mo (cartridge)
BEARING	Compact cartridge w/ Bushing, Sealed bearing
BINDING	Fiber-glass reinforced thermoplastic, tension adjustable
CLEAT	SC-KCR71
SIZE	82x93mm
WEIGHT	146g/pc



SC-R501



BODY	Die-cast aluminum
AXLE	CNC-machined Cr-Mo (cartridge)
BEARING	Cartridge w/ Bushing, Sealed bearing
BINDING	Fiber-glass reinforced thermoplastic, tension adjustable
CLEAT	SC-SLR61
OTHER	SPD-SL compatible
SIZE	88x93mm
WEIGHT	165g/pc



SC-R502



BODY	Engineering thermoplastic
AXLE	CNC-machined Cr-Mo (cartridge)
BEARING	Cartridge w/ Bushing, Sealed bearing
BINDING	Fiber-glass reinforced thermoplastic, tension adjustable
CLEAT	SC-SLR61
OTHER	SPD-SL compatible
SIZE	82x93mm
WEIGHT	148g/pc



SC-R904



BODY	6061 aluminum, CNC-machined
AXLE	CNC-machined Cr-Mo
BEARING	LSL bushing, Sealed bearing
BINDING	Single-sided Cr-Mo, tension adjustable
CLEAT	SC-S01
OTHER	SPD compatible
SIZE	85x71mm
WEIGHT	132g/pc

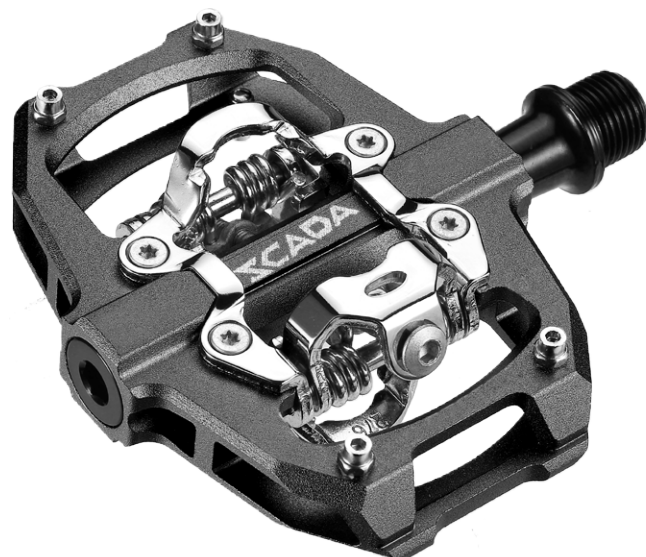


SC-R701B



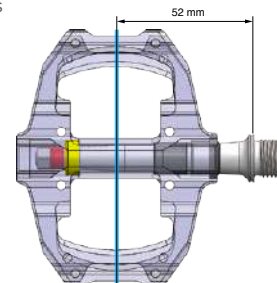
BODY	Polypropylene
AXLE	Forged Cr-Mo
BEARING	Loose Ball
BINDING	Toe Clip + Strap Compatible (Excluded)
SIZE	90x90mm
WEIGHT	147g/pc





SC-M108-Q52

BODY 6061 aluminum, CNC-machined
AXLE CNC-machined Cr-Mo
BEARING LSL bushing, Sealed bearing
BINDING Dual-sided Cr-Mo, tension adjustable
OTHER Replaceable grip pins
CLEAT SC-S01
SIZE 89x96mm
WEIGHT 208g/pc

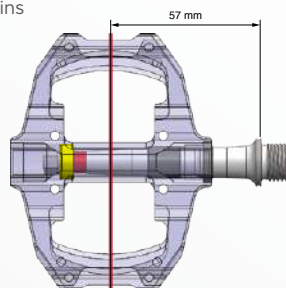


Extrusion Body Drawings
MZ-056

Standard type
Q-factor 52 mm

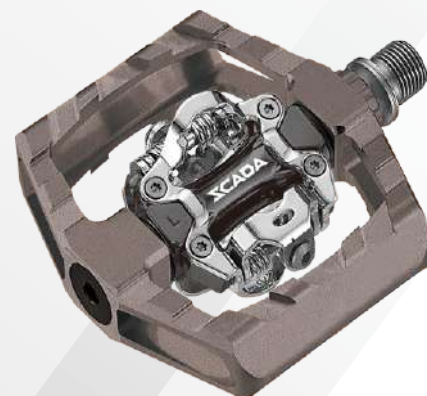
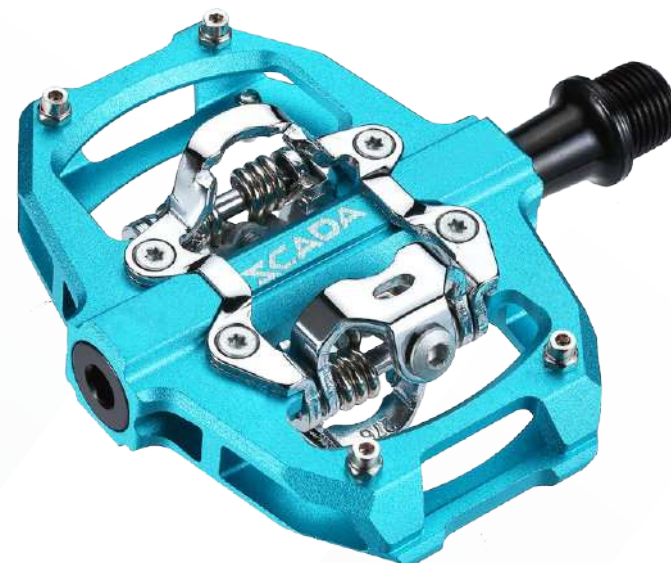
SC-M108-Q57

BODY 6061 aluminum, CNC-machined
AXLE CNC-machined Cr-Mo
BEARING LSL bushing, Sealed bearing
BINDING Dual-sided Cr-Mo, tension adjustable
OTHER Replaceable grip pins
CLEAT SC-S01
SIZE 94x96mm
WEIGHT 211g/pc



Extrusion Body Drawings
MZ-056

Standard type
Q-factor 57 mm



SC-M129

BODY Die-cast aluminum body with CNC aluminum platform
AXLE CNC-machined Cr-Mo (cartridge)
BEARING Pop-Up System w/ LSL Bushing, Sealed bearing
BINDING Dual-sided Cr-Mo, spring-loaded, tension adjustable
CLEAT SC-S01
SIZE 105x103mm
WEIGHT 284g/pc



Extrusion Body Drawings
MZ-048



SC-M120

BODY 6061 aluminum, CNC-machined
AXLE CNC-machined Cr-Mo
BEARING LSL bushing, Sealed bearing
BINDING Dual-sided Cr-Mo, tension adjustable
CLEAT SC-S01
SIZE 82x55mm
WEIGHT 142g/pc



Extrusion Body Drawings
MZ-031

SC-M140

BODY Forged 6061 aluminum
AXLE CNC-machined Cr-Mo
BEARING LSL bushing, Sealed bearing
BINDING Dual-sided Cr-Mo, tension adjustable
CLEAT SC-S01
SIZE 80x55mm
WEIGHT 145g/pc



Compatible Cleat
SC-S01



SC-M101

BODY Die-cast aluminum
AXLE CNC-machined Cr-Mo
BEARING LSL bushing, Sealed bearing
BINDING Dual-sided Cr-Mo, tension adjustable
CLEAT SC-S01
SIZE 80x60mm
WEIGHT 178g/pc

Ball bearings version
SC-M101B



Compatible Cleat
SC-S01



SC-M138

BODY 6061 aluminum, CNC-machined
AXLE CNC-machined Cr-Mo
BEARING LSL bushing, Sealed bearing
BINDING Dual-sided Cr-Mo, tension adjustable
OTHER Replaceable grip pins
CLEAT SC-S01
SIZE 100x93mm
WEIGHT 232g/pc

Extrusion Body
Drawings
MZ-056



SC-M126

BODY 6061 aluminum, CNC-machined
AXLE CNC-machined Cr-Mo
BEARING LSL bushing, Sealed bearing
BINDING Dual-sided Cr-Mo, tension adjustable
OTHER Replaceable grip pins
CLEAT SC-S01
SIZE 107x111mm
WEIGHT 279g/pc

Extrusion Body
Drawings
MZ-002



SC-M102

BODY Die-cast aluminum
AXLE CNC-machined Cr-Mo
BEARING LSL bushing, Sealed bearing
BINDING Dual-sided Cr-Mo, tension adjustable
CLEAT SC-S01
SIZE 108x98mm
WEIGHT 300g/pc



Ball bearings
version
SC-M102B



SC-M122

BODY 6061 aluminum, CNC-machined
AXLE CNC-machined Cr-Mo
BEARING LSL bushing, Sealed bearing
BINDING Dual-sided Cr-Mo, tension adjustable
CLEAT SC-S01
SIZE 87x90mm
WEIGHT 190g/pc

Extrusion Body
Drawings
MZ-026



SC-M111

BODY 6061 aluminum, CNC-machined
AXLE CNC-machined Cr-Mo
BEARING LSL bushing, Sealed bearing
BINDING Dual-sided Cr-Mo, tension adjustable
CLEAT SC-S01
SIZE 82x77mm
WEIGHT 174g/pc

Extrusion Body
Drawings
MZ-019



SC-M112

BODY 6061 aluminum, CNC-machined
AXLE CNC-machined Cr-Mo
BEARING LSL bushing, Sealed bearing
BINDING Dual-sided Cr-Mo, tension adjustable
CLEAT SC-S01
SIZE 82x78mm
WEIGHT 180g/pc

Extrusion Body
Drawings
MZ-019





SC-M221

BODY 6061 aluminum, CNC-machined
AXLE CNC-machined Cr-Mo
BEARING LSL bushing, Sealed bearing
BINDING Single-sided Cr-Mo, tension adjustable
OTHER Replaceable grip pins
CLEAT SC-S01
SIZE 93x113mm
WEIGHT 212g/pc

Extrusion Body
Drawings
MZ-068



SC-M222

BODY Die-cast aluminum
AXLE CNC-machined Cr-Mo
BEARING Needle, sealed bearing
BINDING Single-sided Cr-Mo, tension adjustable
OTHER Replaceable grip pins
CLEAT SC-S01
SIZE 105x100mm
WEIGHT 335g/pc



SC-M117

BODY 6061 aluminum, CNC-machined
AXLE CNC-machined Cr-Mo
BEARING LSL bushing, Sealed bearing
BINDING Dual-sided Cr-Mo, tension adjustable
CLEAT SC-S01
SIZE 103x96mm
WEIGHT 212g/pc

Extrusion Body
Drawings
MZ-016



SC-M117-1

BINDING Single-sided Cr-Mo, tension adjustable
WEIGHT 181g/pc



SC-M219

BODY 6061 aluminum, CNC-machined
AXLE CNC-machined Cr-Mo
BEARING LSL bushing, Sealed bearing
BINDING Single-sided Cr-Mo, tension adjustable
OTHER Replaceable grip pins
CLEAT SC-S01
SIZE 107x100mm
WEIGHT 201g/pc

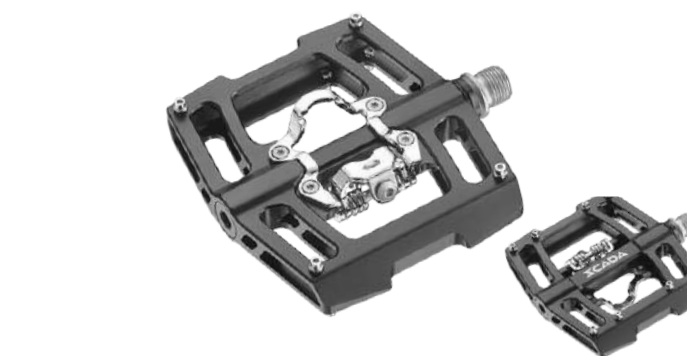
Extrusion Body
Drawings
MZ-063



SC-M218

BODY 6061 aluminum, CNC-machined
AXLE CNC-machined Cr-Mo
BEARING LSL bushing, Sealed bearing
BINDING Single-sided Cr-Mo, tension adjustable
OTHER Replaceable grip pins
CLEAT SC-S01
SIZE 100x100mm
WEIGHT 188g/pc

Extrusion Body
Drawings
MZ-063



SC-M213

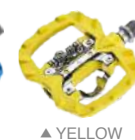
BODY 6061 aluminum, CNC-machined
AXLE CNC-machined Cr-Mo
BEARING LSL bushing, Sealed bearing
BINDING Single-sided Cr-Mo, tension adjustable
OTHER Replaceable grip pins
CLEAT SC-S01
SIZE 107x111mm
WEIGHT 241g/pc

Extrusion Body
Drawings
MZ-002



SC-M216

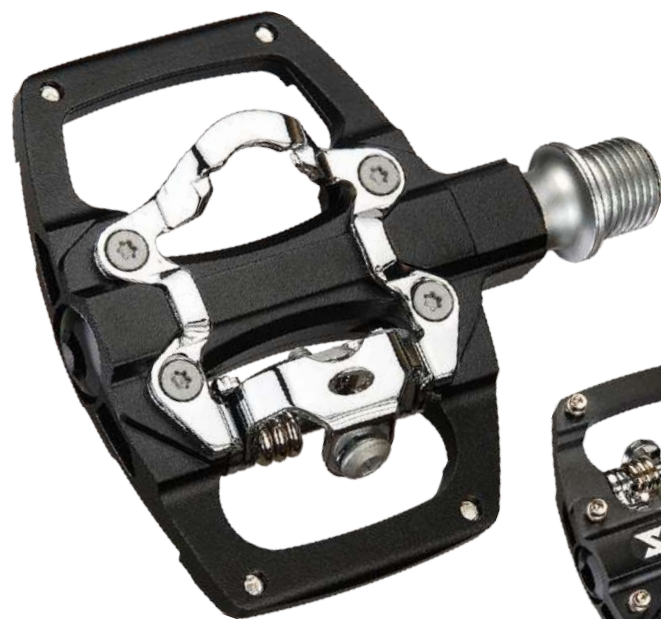
BODY Engineering thermoplastic
AXLE CNC-machined Cr-Mo (cartridge)
BEARING LSL bushing, Sealed bearing
BINDING Single-sided Cr-Mo, tension adjustable
CLEAT SC-S01
SIZE 95x90mm
WEIGHT 177g/pc



▲ BLUE

▲ YELLOW

▲ RED



SC-M209



BODY	6061 aluminum, CNC-machined
AXLE	CNC-machined Cr-Mo
BEARING	LSL bushing, Sealed bearing
BINDING	Single-sided Cr-Mo, tension adjustable
OTHER	Replaceable grip pins
CLEAT	SC-S01
SIZE	84x86mm
WEIGHT	157g/pc

Extrusion Body
Drawings
MZ-025



Compatible Cleat
SC-S01



SC-M206

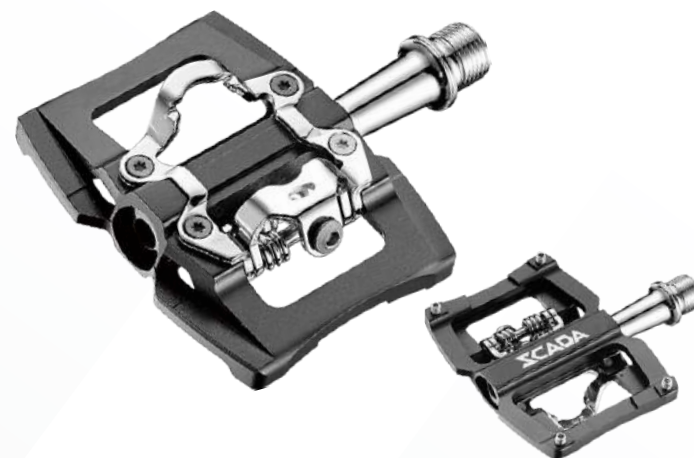


BODY	6061 aluminum, CNC-machined
AXLE	CNC-machined Cr-Mo
BEARING	LSL bushing, Sealed bearing
BINDING	Single-sided Cr-Mo, tension adjustable
OTHER	Replaceable grip pins
CLEAT	SC-S01
SIZE	88x86mm
WEIGHT	150g/pc

Extrusion Body
Drawings
MZ-025



Compatible Cleat
SC-S01



SC-M208

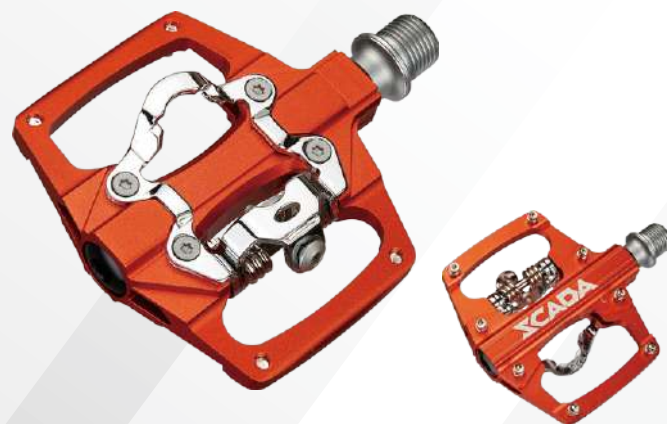


BODY	6061 aluminum, CNC-machined
AXLE	CNC-machined Cr-Mo
BEARING	LSL bushing, Sealed bearing
BINDING	Single-sided Cr-Mo, tension adjustable
OTHER	Replaceable grip pins
CLEAT	SC-S01
SIZE	88x86mm
WEIGHT	160g/pc

Extrusion Body
Drawings
MZ-025



Compatible Cleat
SC-S01



NEW

SC-M224



BODY	6061 aluminum, CNC-machined
AXLE	CNC-machined Cr-Mo
BEARING	LSL bushing, Sealed bearing
BINDING	Single-sided Cr-Mo, tension adjustable
CLEAT	SC-S01
SIZE	113x109mm
WEIGHT	218g/pc

Extrusion Body
Drawings
MZ-036



Compatible Cleat
SC-S01



SC-M203



BODY	Die-Cast Aluminum
AXLE	CNC-machined Cr-Mo(cartridge)
BEARING	Cartridge w/ Bushing, Sealed bearing
BINDING	Single-sided Cr-Mo, tension adjustable
OTHER	Replaceable grip pins
CLEAT	SC-S01
SIZE	104x85mm
WEIGHT	189g/pc



Compatible Cleat
SC-S01



SC-M204-1



BODY	Die-Cast Aluminum
AXLE	CNC-machined Cr-Mo
BEARING	LSL bushing, Sealed bearing
OPTION	Replaceable grip pins
OTHER	Reflectors included
CLEAT	SC-S01
SIZE	106x98mm
WEIGHT	267g/pc



Ball bearings
version
SC-M204B-1



Compatible Cleat
SC-S01



SC-M205



BODY	Die-cast aluminum body with plastic inlaid kraton tread
AXLE	CNC-machined Cr-Mo
BEARING	LSL bushing, Sealed bearing
BINDING	Single-sided Cr-Mo, tension adjustable
CLEAT	SC-S01
SIZE	108x100 mm
WEIGHT	275 g/pc



Ball bearings
version
SC-M205B



Compatible Cleat
SC-S01





NEW

SC-M223

BODY	Die-cast aluminum
AXLE	CNC-machined Cr-Mo
BEARING	LSL bushing, Sealed bearing
BINDING	Single-sided Cr-Mo, tension adjustable
OTHER	Reflectors included
SIZE	106x67mm
WEIGHT	172g/pc

NEW

SC-M223D

BODY	Die-cast aluminum
AXLE	CNC-machined Cr-Mo
BEARING	2 Polymer Bushings
BINDING	Single-sided Cr-Mo, tension adjustable
OTHER	Reflectors included
SIZE	106x67mm
WEIGHT	174g/pc



SC-M301

BODY	Die-cast Aluminum
AXLE	CNC-machined Cr-Mo
BEARING	LSL bushing, Sealed bearing
OTHER	Reflectors included
SIZE	100x67mm
WEIGHT	133g/pc


 Ball bearings
 version
SC-M301B



SC-M302

BODY	One-piece, die-cast aluminum
AXLE	CNC-machined Cr-Mo
BEARING	LSL bushing, Sealed bearing
OTHER	Reflectors included
SIZE	99x67mm
WEIGHT	143g/pc


 Ball bearings
 version
SC-M302B



NEW

SC-M311

BODY	Die-cast aluminum
AXLE	CNC-machined Cr-Mo
BEARING	LSL bushing, Sealed bearing
OTHER	Reflectors included
SIZE	106x67mm
WEIGHT	138g/pc

NEW

SC-M311D

BODY	Die-cast aluminum
AXLE	CNC-machined Cr-Mo
BEARING	2 Polymer Bushings
OTHER	Reflectors included
SIZE	106x67mm
WEIGHT	139g/pc



SC-M303

BODY	One-piece, die-cast aluminum
AXLE	CNC-machined Cr-Mo (cartridge)
BEARING	Cartridge w/ Bushing, Sealed bearing
OTHER	Reflectors included
SIZE	101x68mm
WEIGHT	146g/pc



SC-M307

BODY	Die-cast aluminum body with kraton inlaid
AXLE	CNC-machined Cr-Mo
BEARING	LSL bushing, Sealed bearing
OTHER	Reflectors included
SIZE	109x89mm
WEIGHT	253g/pc

SC-B636



BODY 6061 aluminum, CNC-machined
AXLE CNC-machined Cr-Mo
BEARING Compact cartridge w/ Bushing, Sealed bearing
OTHER Replaceable grip pins
SIZE 112x102mm
WEIGHT 152g/pc

Extrusion Body
 Drawings
MZ-087



NEW

SC-B743



BODY 6061 aluminum, CNC-machined
AXLE CNC-machined Cr-Mo
BEARING LSL bushing, Sealed bearing
OTHER Replaceable grip pins
SIZE 113x109mm
WEIGHT 185g/pc

Extrusion Body
 Drawings
MZ-066



SC-B649



BODY 6061 aluminum, CNC-machined
AXLE CNC-machined Cr-Mo
BEARING Compact cartridge w/ Bushing, Sealed bearing
OTHER Replaceable grip pins
SIZE 110x108mm
WEIGHT 189g/pc

Extrusion Body
 Drawings
MZ-034



SC-B663



BODY 6061 aluminum, CNC-machined
AXLE CNC-machined Cr-Mo
BEARING Compact cartridge w/ Bushing, Sealed bearing
OTHER Replaceable grip pins
SIZE 102x108mm
WEIGHT 170g/pc

Extrusion Body
 Drawings
MZ-034

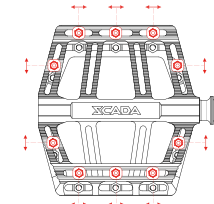
SC-B641



BODY 6061 aluminum, CNC-machined
AXLE CNC-machined Cr-Mo
BEARING LSL bushing, Sealed bearing
OTHER Replaceable grip pins, position adjustable
SIZE 112x110mm
WEIGHT 215g/pc

Extrusion Body
 Drawings
MZ-066

ADJUSTABLE PIN POSITION

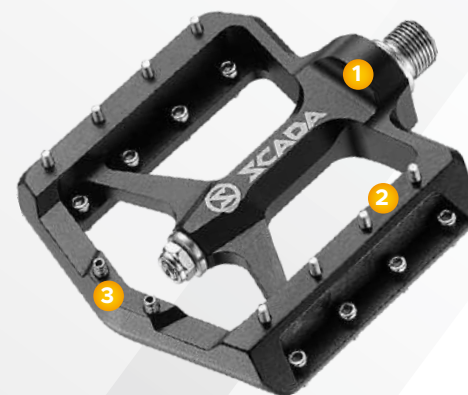


SC-B642



BODY 6061 aluminum, CNC-machined
AXLE CNC-machined Cr-Mo
BEARING LSL bushing, Sealed bearing
OTHER Replaceable grip pins
SIZE 112x110mm
WEIGHT 200g/pc

Extrusion Body
 Drawings
MZ-066



SC-B680



BODY 6061 aluminum, CNC-machined
AXLE CNC-machined Cr-Mo
BEARING Oversize Bearing, LSL Bushing
OTHER Replaceable grip pins
SIZE 110x98mm
WEIGHT 214g/pc

Extrusion Body
 Drawings
MZ-052



BODY
 One-piece AL6061 aluminum
 CNC machined body with one
 large bearing and longer axle
 improves pedal strength.



Wider Pedal Surface
 Wider platform surface area
 for a better grip.



Low-profile Design
 Being closer to the axle
 lowers center of gravity
 for greater efficiency.

SC-B635



BODY Die-cast Aluminum
AXLE CNC-machined Cr-Mo
BEARING LSL bushing, Sealed bearing
OTHER Replaceable grip pins
SIZE 112x110mm
WEIGHT 220g/pc



SC-B682



BODY	6061 aluminum, CNC-machined
AXLE	CNC-machined Cr-Mo
BEARING	LSL bushing, Sealed bearing
OTHER	Replaceable grip pins
SIZE	93x94mm
WEIGHT	169g/pc

Extrusion Body
Drawings
MZ-012



SC-B614



BODY	6061 aluminum, CNC-machined
AXLE	CNC-machined Cr-Mo
BEARING	LSL bushing, Sealed bearing
OTHER	Replaceable grip pins
SIZE	103x100mm
WEIGHT	183g/pc

Extrusion Body
Drawings
MZ-012

SC-B634



BODY	6061 aluminum, CNC-machined
AXLE	CNC-machined Cr-Mo
BEARING	LSL bushing, Sealed bearing
OTHER	Replaceable grip pins
SIZE	86x100mm
WEIGHT	160g/pc

Extrusion Body
Drawings
MZ-012



SC-B729



BODY	6061 aluminum, CNC-machined
AXLE	CNC-machined Cr-Mo
BEARING	LSL Bushing+Needle Bearing+Sealed Bearing
OTHER	Replaceable grip pin
SIZE	114x110mm
WEIGHT	187g/pc

Extrusion Body
Drawings
MZ-036



SC-B707



BODY	6061 aluminum, CNC-machined
AXLE	CNC-machined Cr-Mo
BEARING	LSL Bushing, Needle Bearing, Sealed Bearing
OTHER	Replaceable grip pin
SIZE	113x109mm
WEIGHT	174g/pc

Extrusion Body
Drawings
MZ-036



SC-B730



BODY	6061 aluminum, CNC-machined
AXLE	CNC-machined Cr-Mo
BEARING	LSL Bushing+Needle Bearing+Sealed Bearing
OTHER	Replaceable grip pin
SIZE	111x109mm
WEIGHT	175g/pc

Extrusion Body
Drawings
MZ-036



SC-B609



BODY	6061 aluminum, CNC-machined
AXLE	CNC-machined Cr-Mo
BEARING	LSL bushing, Sealed bearing
OTHER	Replaceable grip pins
SIZE	117x110mm
WEIGHT	208g/pc

Extrusion Body
Drawings
MZ-005


NEW

SC-B744



BODY 6061 aluminum, CNC-machined
AXLE CNC-machined Cr-Mo
BEARING LSL bushing, Sealed bearing
OTHER Replaceable grip pins
SIZE 93x106mm
WEIGHT 154g/pc

Extrusion Body
 Drawings
MZ-036



SC-B676



BODY 6061 aluminum, CNC-machined
AXLE CNC-machined Cr-Mo
BEARING LSL bushing, Sealed bearing
OTHER Replaceable grip pins
SIZE 113x105mm
WEIGHT 205g/pc

Extrusion Body
 Drawings
MZ-007



SC-B631



BODY 6061 aluminum, CNC-machined
AXLE CNC-machined Cr-Mo
BEARING LSL bushing, Sealed bearing
OTHER Replaceable grip pins
SIZE 113x105mm
WEIGHT 197g/pc

Extrusion Body
 Drawings
MZ-007



SC-B709



BODY Engineering thermoplastic
AXLE CNC-machined Cr-Mo
BEARING LSL bushing, Sealed bearing
OPTION Strap mountable
OTHER Replaceable grip pins / Mold-in-pins
SIZE 113x114 mm
WEIGHT 183g/pc

SC-B709D



BEARING 2 Polymer Bushings
WEIGHT 175g/pc

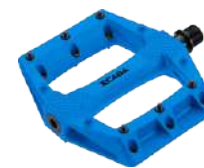
▲ BLACK



▲ WHITE



▲ RED



▲ BLUE



▲ GREEN



▲ NEON PINK



▲ LIME



▲ ORANGE



▲ PURPLE



Strap mountable

SC-B710



BODY Engineering thermoplastic
AXLE CNC-machined Cr-Mo
BEARING Oversize bearing, Needle bearing, Sealed bearing
OTHER Replaceable grip pin
SIZE 117x114 mm
WEIGHT 171g/pc



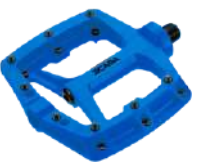
▲ BLACK



▲ WHITE



▲ RED



▲ BLUE



▲ GREEN



▲ NEON PINK



▲ LIME



▲ ORANGE



▲ PURPLE



▲ BLACK

NEW
SC-B736

BODY Engineering thermoplastic
AXLE CNC-machined Cr-Mo
BEARING LSL bushing, Sealed bearing
OTHER Replaceable grip pins
SIZE 102x100mm
WEIGHT 146g/pc



▲ WHITE



▲ RED



▲ BLUE



▲ GREEN



▲ NEON PINK



▲ LIME



▲ ORANGE



▲ PURPLE



▲ BLACK



▲ WHITE



▲ RED



▲ BLUE



▲ GREEN



▲ NEON PINK



▲ LIME



▲ ORANGE



▲ PURPLE



Strap mountable

SC-B686

BODY Engineering thermoplastic
AXLE CNC-machined Cr-Mo
BEARING LSL bushing, Sealed bearing
OTHER Replaceable grip pins
SIZE 113x114mm
WEIGHT 180 g/pc



▶ BLACK



▲ WHITE



▲ LIME



▲ ORANGE



▲ RED



▲ GREEN



▲ BLUE



◀ LIME

SC-B625

BODY Engineering thermoplastic
AXLE CNC-machined Cr-Mo
BEARING LSL bushing, Sealed bearing
OTHER Replaceable grip pins
SIZE 113x105mm
WEIGHT 175g/pc



▲ WHITE



▲ BLACK



▲ ORANGE



▲ RED



▲ GREEN



▲ BLUE


NEW

SC-B726D

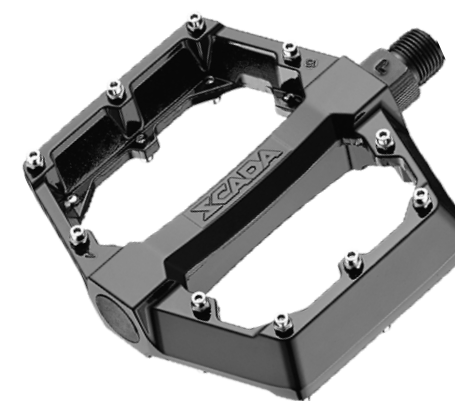


BODY	Die-Cast Aluminum
AXLE	CNC-machined Cr-Mo
BEARING	2 Polymer Bushings
OTHER	Reflectors included
SIZE	113x110mm
WEIGHT	218g/pc

SC-B655-1



BODY	Die-Cast Aluminum
AXLE	CNC-machined Cr-Mo
BEARING	LSL bushing, Sealed bearing
OTHER	Replaceable grip pins
SIZE	115x108mm
WEIGHT	230g/pc



SC-B655B-1



BODY	Die-Cast Aluminum
AXLE	Cr-Mo
BEARING	Ball bearings version



SC-B655



BODY	Die-Cast Aluminum
OTHER	Mold-in Pins

Ball Bearings
 version
SC-B655B



SC-B601



BODY	Die-Cast Aluminum
AXLE	CNC-machined Cr-Mo
BEARING	LSL bushing, Sealed bearing
OPTION	Replaceable grip pins
OTHER	Reflectors included
SIZE	111x108mm
WEIGHT	225g/pc



SC-B601B



BODY	Die-Cast Aluminum
AXLE	Cr-Mo
BEARING	Ball bearings version
OPTION	Replaceable grip pins
OTHER	Reflectors included
SIZE	111x108mm
WEIGHT	218g/pc

SC-B622



BODY	Die-Cast Aluminum
AXLE	CNC-machined Cr-Mo
BEARING	LSL bushing, Sealed bearing
OTHER	Mold-in pins
SIZE	106x98mm
WEIGHT	232g/pc





SC-C829



BODY	6061 aluminum, CNC-machined
AXLE	CNC-machined Cr-Mo
BEARING	LSL bushing, Sealed bearing
OTHER	Replaceable grip pins
SIZE	100x70mm
WEIGHT	118g/pc

Extrusion Body
Drawings
[MZ-064](#)

SC-C830



BODY	6061 aluminum, CNC-machined
AXLE	CNC-machined Cr-Mo
BEARING	LSL bushing, Sealed bearing
OTHER	Replaceable grip pins
SIZE	100x70mm
WEIGHT	115g/pc

Extrusion Body
Drawings
[MZ-064](#)



SC-C806



BODY	6061 aluminum, CNC-machined body
AXLE	CNC-machined Cr-Mo
BEARING	LSL bushing, Sealed bearing
OPTION	Reflectors
SIZE	93x53mm
WEIGHT	100g/pc

Extrusion Body
Drawings
[MZ-004](#)



SC-C832



BODY	Die-Cast Aluminum with sand-paper
AXLE	CNC-machined Cr-Mo
BEARING	LSL bushing, Sealed bearing
OTHER	Reflectors included
SIZE	110x88 mm
WEIGHT	218g/pc

SC-C832D



BODY	Die-Cast Aluminum with sand-paper
AXLE	CNC-machined Cr-Mo
BEARING	2 Polymer Bushing
OTHER	Reflectors included
SIZE	110x88 mm
WEIGHT	220g/pc



SC-C811



BODY	6061 aluminum, CNC-machined
AXLE	CNC-machined Cr-Mo
BEARING	LSL bushing, Sealed bearing
OPTION	Reflectors
SIZE	104x72mm
WEIGHT	129g/pc

Extrusion Body
Drawings
[MZ-015](#)



SC-C825D



BODY	Engineering thermoplastic body with sand-paper
AXLE	CNC-machined Cr-mo
BEARING	2 Polymer Bushing
OTHER	Reflectors included
SIZE	108x86 mm
WEIGHT	149g/pc



▲ BLACK



▲ BLUE



▲ ORANGE



▲ RED



▲ YELLOW

SC-C825



BODY	Engineering thermoplastic body with sand-paper
AXLE	CNC-machined Cr-Mo
BEARING	LSL bushing, Sealed bearing
OTHER	Reflectors included
SIZE	108x86mm
WEIGHT	188g/pc



SC-C805



BODY	Forged aluminum
AXLE	CNC-machined Cr-Mo
BEARING	LSL bushing, Sealed bearing
SIZE	111x72mm
WEIGHT	188g/pc



NEW

SC-C835



BODY	Die-cast aluminum body with plastic inlaid kraton tread
AXLE	CNC-machined Cr-Mo
BEARING	LSL bushing, Sealed bearing
OTHER	Reflectors included
SIZE	108x81mm
WEIGHT	153g/pc

NEW

SC-C835D



BODY	Die-cast aluminum body with plastic inlaid kraton tread
AXLE	CNC-machined Cr-Mo
BEARING	2 Polymer Bushings
OTHER	Reflectors included
SIZE	108x81mm
WEIGHT	155g/pc

SC-C821



BODY	6061 aluminum, CNC-machined body with sand-paper
AXLE	CNC-machined Cr-Mo
BEARING	LSL bushing, Sealed bearing
OTHER	Reflectors included
SIZE	98x78mm
WEIGHT	158g/pc

Extrusion Body
Drawings
MZ-001



SC-C809



BODY	Die-cast aluminum body with plastic inlaid kraton tread
AXLE	CNC-machined Cr-Mo
BEARING	LSL bushing, Sealed bearing
OTHER	Reflectors included
SIZE	106x74mm
WEIGHT	173g/pc

Ball
Bearings

Ball bearings
version
SC-C809B





SC-S311



BODY Die-cast aluminum
AXLE Over-size CNC-machined Cr-Mo
BEARING Needle, sealed bearing
BINDING Single-sided, Cr-Mo tension adjustable
OPTION Toe-clip + Strap
CLEAT SC-S01
SIZE 105x100mm
WEIGHT 400g/pc



SC-S301



BODY Die-cast aluminum
AXLE Over-size CNC-machined Cr-Mo
BEARING Needle, Sealed bearing
BINDING Single-sided, Cr-Mo tension adjustable
OPTION Toe-clip + Strap
CLEAT SC-S01
SIZE 110x70mm
WEIGHT 384g/pc



SC-S302



BODY Die-cast aluminum
AXLE Over-size CNC-machined Cr-Mo
BEARING Needle, Sealed bearing
BINDING Single-sided, Cr-Mo tension adjustable
OPTION Toe-clip + Strap
CLEAT SC-S01
SIZE 108x80mm
WEIGHT 297g/pc



SC-S306



BODY Die-cast aluminum
AXLE Over-size CNC-machined Cr-Mo
BEARING Needle, Sealed bearing
BINDING Look Delta system, Shimano SPD system compatible
CLEAT SC-DCR61 & SC-S01
SIZE 87x99 mm
WEIGHT 270g/pc



TSS04

BODY Engineering thermoplastic
SIZE 177x112mm
WEIGHT 247g/pc



▲ KEO SYSTEM ▲ ROAD SYSTEM ▲ MTB SYSTEM ▲ DELTA SYSTEM



TSS02

BODY Engineering thermoplastic
SIZE 100x83mm
WEIGHT 177g/pc



▲ DELTA SYSTEM



TSS01

BODY Engineering thermoplastic
SIZE 128x86 mm
WEIGHT 196g/pc



▲ DELTA SYSTEM



PEDAL CLEATS ACCESSORIES



SC-KCR71 Pat

MODE Floating (7°)
MATERIAL Engineering thermoplastic
COMPATIBILITY Look Keo system
WEIGHT 24g/pc



SC-KCR72 Pat

MODE Floating (7°)
MATERIAL Engineering thermoplastic / TPU plastic
COMPATIBILITY Look Keo system
WEIGHT 23g/pc



SC-KCB01 Pat

MODE Fixed
MATERIAL Engineering thermoplastic
COMPATIBILITY Look Keo system
WEIGHT 24g/pc



SC-KCB02 Pat

MODE Fixed
MATERIAL Engineering thermoplastic / TPU plastic
COMPATIBILITY Look Keo system
WEIGHT 23g/pc



SC-SLR61 Pat

MODE Floating (6°)
MATERIAL Engineering thermoplastic
COMPATIBILITY SPD-SL
WEIGHT 25g/pc



SC-SLR62 Pat

MODE Floating (6°)
MATERIAL Engineering thermoplastic / TPU plastic
COMPATIBILITY SPD-SL
WEIGHT 25g/pc



SC-SLB01 Pat

MODE Fixed
MATERIAL Engineering thermoplastic
COMPATIBILITY SPD-SL
WEIGHT 25g/pc



SC-SLB02 Pat

MODE Fixed
MATERIAL Engineering thermoplastic / TPU plastic
COMPATIBILITY SPD-SL
WEIGHT 25g/pc

PEDAL CLEATS & CLEAT COVERS ACCESSORIES



SC-S01 Pat

COMPATIBILITY SPD
WEIGHT 20g/pc
► SINGLE DIRECTION RELEASE



SC-C03F Pat

COMPATIBILITY SPD
WEIGHT 20g/pc
► MULTI-DIRECTION RELEASE



SC-DCR61 Pat

MODE Floating (6°)
MATERIAL Engineering thermoplastic
COMPATIBILITY Look Delta system
WEIGHT 25g/pc



SC-CK1B Pat

COMPATIBILITY Look Delta system
WEIGHT 37g/pc
Eliminates cleat wear.
Improves walking comfort.
Lightweight, durable and flexible.
Compatible with SCADA Cleats DCR61.



SC-CK6B Pat

WEIGHT 43g/pc
Eliminates cleat wear.
Improves walking comfort.
Lightweight, durable and flexible.
Compatible with SCADA Cleats SLR61, SLR62, SLB01, SLB02.



SC-CK2B Pat

WEIGHT 7g/pc
Eliminates cleat wear.
Improves walking comfort.
Lightweight, durable and flexible.
Compatible with SCADA Cleats S01, C03F.



SC-CK3B Pat

COMPATIBILITY Look Keo system
WEIGHT 23g/pc
Eliminates cleat wear.
Improves walking comfort.
Lightweight, durable and flexible.
Compatible with SCADA Cleats KCR71, KCR72, KCB01, KCB02.



PEDAL PIN COLOR OPTION Custom grip pin colors based on MOQ 150 PRS

ESS045-8

M4 X 8 MM



ESS088-4

M4 X 4 MM



ESS088-8

M4 X 8 MM



ESS113

M4 X 4 MM



SS-00019

M4 X 8 MM



ESS112-4

M4 X 4 MM



ESS112-8

M4 X 8 MM



EMP264



EMP268



SC-CCG01 Pat

BOOM 6061 aluminum, CNC-machined with anodized
HINGE Nylon 6, Hinge & universal hinge available
GUIDE Tube TPU



SC-CCG02 Pat

BOOM Nylon 6 + glass fiber
HINGE Nylon 6, Hinge & universal hinge available
GUIDE Tube TPU



SC-CCG03 Pat

BOOM TPU
HINGE TPU
GUIDE Tube TPU



AWARD 2010



BIKE AND FREERIDE MILESTONE AWARD 2011

Voted by the readers of bike (europe's biggest mtb magazine) and freeride (the gravity branch of bike).

EUROBIKE AWARD 2010

Design competition held annually by trade fair organizers in association with if design award.

MANUFACTURED BY SCADA